



## **Twin-Wall Panels: The Problem Solvers**

With extrusion, objects are created using pressure and heat – just as with KIBO's high-impact polypropylene twin-wall panels. These possess high impact, flexural and compressive strength but are nonetheless ultralight and also moisture, weather and temperature resistant. As a result, the KIBO-H, -M and -X product portfolio ensures high performance whatever the application.



**KIBO**

# KIBO Twin-Wall Panels

KIBO twin-wall panels incorporate unique internal spacers formed with the walls as part of the manufacturing process. The panels come in three versions: each with different spacer configurations. These spacers and the structures they make possible mean that KIBO twin-wall panels are ideal for use in a wide variety of applications. Their level surfaces and extremely light weight make them outstanding materials for upmarket point-of-sale displays and compact, lightweight packaging. As they possess superb rigidity and strength, KIBO-X panels make an excellent choice for portable heavy-duty structures for trade fairs and other commercial exhibitions.

The KIBO product range offers twin-wall panels as semi-finished stock and also as prefabricated, finished modules including floor protection panels and jobsite partitioning walls. KIBO floor protection systems are used to protect high-end wood or stone flooring from damage during renovation work. In indoor and outdoor applications alike, KIBO modular wall systems serve as highly reliable site hoarding and dust control walls as well as pedestrian routing systems or posting surfaces for advertisements and notices.

## Features, Benefits and Options



All three KIBO twin-wall panel versions are identical in their basic materials properties and are easy to process by cutting, drilling, welding, etc. All have outstanding chemical resistance, yet are recyclable and therefore environment-friendly. All provide excellent thermal and acoustic insulation while maintaining their form and function even at high ambient temperatures. The design characteristic in which KIBO-H, KIBO-M and KIBO-X differ is the spacer configuration between their walls.



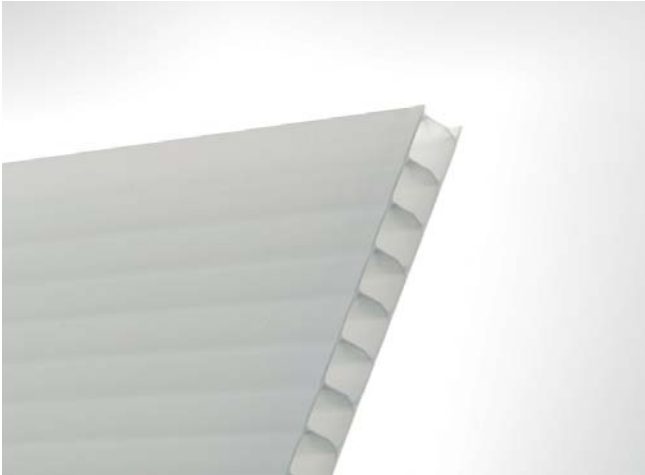
- Outstanding impact resistance despite light weight
- Superb flexural and compressive strength, easy to process
- Excellent moisture and weathering resistance, wide service temperature range (-20 to +90 °C)
- Smooth, level surfaces
- Suitable for digital and/or screen printing
- Suitable for lamination with a variety of materials
- Highly durable, easy to clean
- Recyclable

Optional features:

- Enhanced UV stability or flame resistance
- Anti-static or electrically conductive
- Corona treatment
- Glass-fibre or talcum reinforcement
- Two-colour coextruded panels
- Pre-cut blanks and custom formats
- Antibacterial

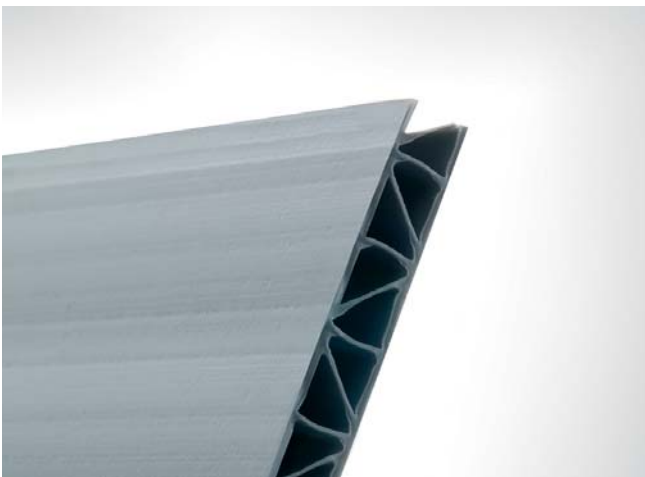


# Twin-Wall Panels



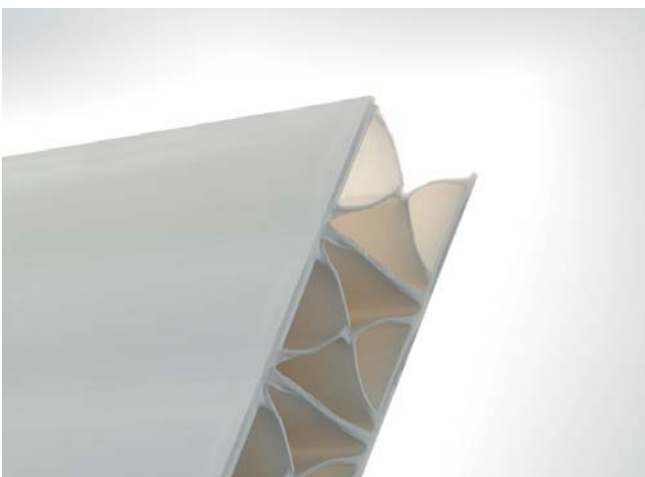
## **KIBO-H Panels: The Multifunctional Lightweight**

KIBO-H panels are the featherweights in the KIBO product family. Despite their extremely light weight, they are highly rigid and exceptionally well-suited for a broad range of applications. Examples include protective packaging for transported goods, moisture barriers in building construction, protective floor coverings, gardening accessories, advertising billboards, commercial displays as well as a wide variety of uses in automotive interiors, toy manufacturing and model fabrication.



## **KIBO-M Panels: Unbeatably Rigid and Light**

KIBO-M panels incorporate vertical and diagonal spacers providing an unbeatable combination of lightness and rigidity. These versatile panels excel in a multitude of applications as protective transport packaging and packing partitions. In the advertising field, KIBO-M panels are used as lightweight carrier surfaces for posters and showcase displays. In the trade show sector, KIBO-M has made a splash in the area of portable promotional elements for exhibition booths.



## **KIBO-X Panels: "X's" Inside – For XXL Jobs Outside**

KIBO-X is the professional choice for heavy-duty jobs and XXL applications such as large-scale banners, big structures for trade-show booths or other commercial displays and jobsite wall systems. The vertical and "X"-shaped spacer structure within these PP twin-wall panels provides the highest flexural strength with very low area weight. In the automotive sector, KIBO-X panels excel in assembly-line part carriers and as interior finishing in vehicles of all types including lorries, trucks, motor homes and caravans.

# Examples of Applications



Poster panels/displays, compact packaging/transport boxes, weed control shields



Package inserts/partitions, advertising boards, heavy-duty transport boxes



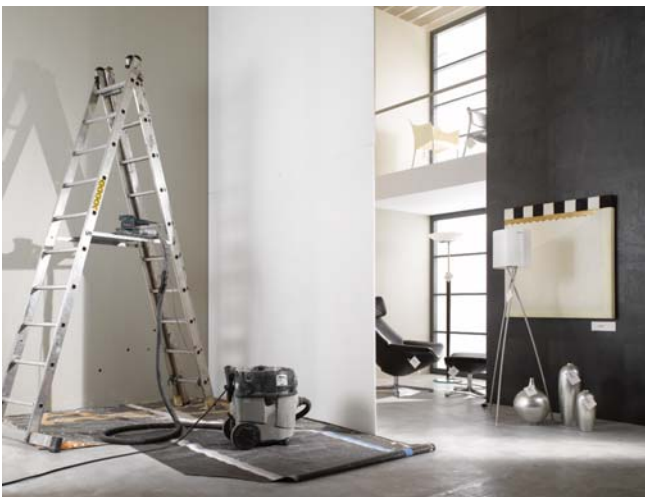
Billboard panels, pallet sleeves, dust control partitions

# Prefabricated Systems



## Floor Protection Systems

Being quick and easy to install, temporary floor covering systems made from KIBO twin-wall panels provide highly effective protection over wood (parquetry, floorboards etc.), stone (marble, slate etc.) or other easily-damaged flooring during construction or renovation work. Designed to take a beating and come back for more, they have high compressive strength and impact strength, outstanding moisture and rotting resistance as well as smooth, floor-friendly surfaces. With these properties, they live up fully to the name: "floor protection system".



## Dust Control Wall Systems

Offering users convincing advantages such as high flexural, compressive and impact strength in addition to their light weight, KIBO twin-wall panels make ideal dust control partitions for indoor construction, remodelling or renovation. Fully recyclable and therefore environment-friendly, they are easily adapted to specific site dimensions and can be reused again and again. To sum it up: they reduce costs and put money in your company's pocket.



## Site Hoarding Systems

KIBO twin-wall hoarding systems provide users clear advantages with their easy and cost-efficient storage and transport. Their surprisingly light weight and ease of handling radically reduce the need for equipment and personnel as compared to conventional site hoardings. With outstanding resistance to moisture, rotting and outdoor weathering, they are eminently well suited as hoardings around building construction and civil engineering jobsites. Whether used indoors or outdoors, KIBO site hoarding systems reliably cordon off the worksite, keeping out unwanted intruders and minimizing disturbance of the surrounding environment.

# Product Programme

## KIBO-H Panels

Thickness, approx. (mm)	Area weight, approx. (g/m <sup>2</sup> )
2.0	280 / 350 / 400
2.5	350 / 450
3.0	450 / 600 / 800
3.5	650 / 800
4.0	680 / 800 / 1000
4.7	1000
5.0	1060 / 1250 / 1500
6.0	1750 / 2000

## KIBO-M Panels

Thickness, approx. (mm)	Area weight, approx. (g/m <sup>2</sup> )
5.0	1250 / 1500
6.0	1500 / 1800
27.0	4000

## KIBO-X Panels

Thickness, approx. (mm)	Area weight, approx. (g/m <sup>2</sup> )
8.0	2000
9.0	1750 / 2000
10.0	1800 / 2000 / 2500 / 2700
12.0	2700 / 3000
13.0	3000 / 3500

## Next-Loop! The Cost-Saving Idea for Our Environment

At Infinex, we are known throughout the industry for our outstanding quality and exceptional workmanship. This is a result of our uncompromising quality assurance, which starts with the incoming raw materials and extends through the entire manufacturing process to the finished products leaving the plant. However, even the best panels and products can, on occasion, be damaged or even destroyed by improper use. That's why, we have set up our exclusive 'Next-Loop!' service for our KINO twin-wall panels.

When it comes to the repair, replacement or recycling of damaged panels, customers can benefit from this service in several different ways. In particular, the panels stay in use for much longer, so reducing the need for new purchases. This helps protect the environment and conserve natural resources. Customers also benefit from low repair costs, savings on replacement panels and credits for returned panels – a definite



plus for the environment. What is more, the "Next-Loop!" services are not only provided for KIBO products but for almost all types of similar polypropylene panels as well.

# Our Promise

At Infinex, we focus on coming up with new, surprising ideas – today we're thinking about your requirements for tomorrow. In looking for new ways to solve your problems, we are not afraid to take unconventional paths, relying on our imaginations to find uncommon solutions along with the courage to go down roads less-travelled. By keeping our eyes open and constantly learning more, we break through barriers and set new standards. True to our roots as a family-owned company, we listen exactly to what you have to say and attach the utmost importance to fairness in our business relationships. At Infinex, our employees, customers and suppliers are fully committed in heart and mind and work together as partners.

## TRIPLEX Kunststoffe GmbH

Heinrich-Schickhardt-Straße 1

72221 Haiterbach (Germany)

Telephone: +49 (0)7456 69083-0

Telefax: +49 (0)7456 69083-13

info@kibo.de · www.kibo.de

Certification:

